

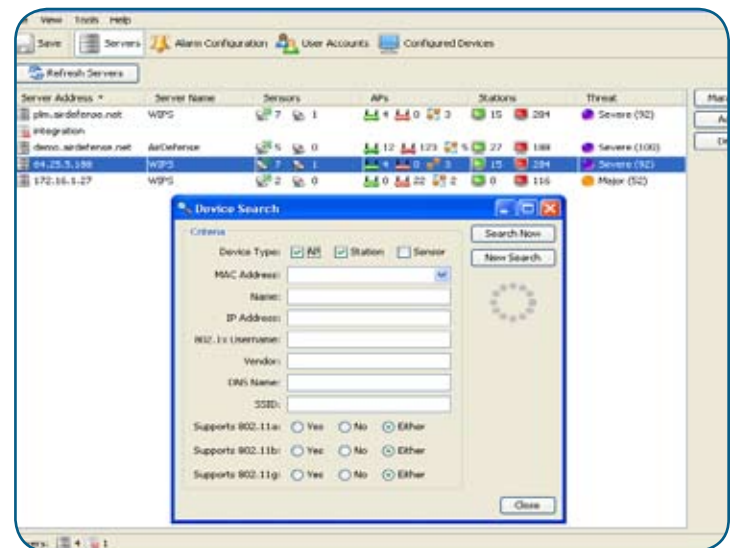
CENTRALIZED MANAGEMENT CONSOLE

The Centralized Management Console is an application that allows the administrator to manage multiple AirDefense Enterprise appliances from one single console. For very large scale deployments, it greatly reduces the burden of managing settings across multiple servers and provides a centralized server summary view, alarm configuration, and user management.

Manage Settings of Multiple Appliances From One Console

AirDefense Enterprise's distributed architecture supports sensors in hundreds of locations reporting to the server. For very large deployments it may be required to run multiple servers to support thousands of sensors at various locations. The Centralized Management Console now enables you to reach any level of scale by providing a summary view of multiple server appliances and the ability to launch any of the AirDefense Enterprise views with a single login. The Centralized Management Console can also assist in managing settings across multiple appliances, by pushing the alarm configuration and user account management from a single master server to multiple slave servers. Not only does this reduce administrative tasks, it ensures consistent settings across multiple servers. The administrator can also perform a single device import for client stations across all servers to ensure mobile users are automatically authorized on each system in the event they travel from one location to the next.

The Centralized Management Console also provides the ability to check and compare configured policies to ensure consistency of WLAN policies across multiple servers. The utility polls each system, shows the policy configuration for each server side-by-side and highlights any variances in policy. Additionally, the Centralized Management Console provides a set of server management tools. For example, the device search allows administrators to search for a specific MAC address across all appliances, covering all locations. Once the wireless device is found, the administrator can then quickly launch the specific Enterprise system to drill down into the device detail. Other tools include the ability to upload service modules to or download server logs from all appliances simultaneously.



Device Search

Features include:

- Summary View of Server Appliances
- Alarm Configuration
- User Management
- Device Import
- Device Search
- Policy Comparison
- Service Module Upload
- Log File Download

Benefits:

- Greatly reduces burden of managing multiple server appliances
- Ensure consistent alarm configuration and policy settings across multiple appliances
- Enables administrators to reach any level of scale



Policy Comparison